

## Artisan Stone Deck Oven

MODEL: 4T Series



### CAPACITY (Per Deck)

2 Half Size Sheet Pans (13" x 18" - 30mm x 457mm)

1 Full Size Sheet Pans (18" x 26" - 457 mm x 660 mm)

### ELECTRICAL SYSTEM

#### 1 Phase 50/60 HZ, 2 wires ( ground wire not included)

4T1	208V	9.3 Kw	45 A
	240V	9.3 Kw	39 A
4T2	208V	18.6 Kw	90 A
	240V	18.6 Kw	78 A
4T3	208V	27.9 Kw	135 A
	240V	27.9 Kw	117 A
4T4	208V	37.2 Kw	179 A
	240V	37.2 Kw	155 A

#### 3 Phases 50/60 HZ, 3 wires ( ground wire not included)

4T1	208V	9.3 Kw	28 A
	240V	9.3 Kw	24 A
	480V	9.3 Kw	12 A
4T2	208V	18.6 Kw	52 A
	240V	18.6 Kw	48 A
	480V	18.6 Kw	24 A
4T3	208V	27.9 Kw	78 A
	240V	27.9 Kw	72 A
	480V	27.9 Kw	36 A
4T4	208V	37.2 Kw	104 A
	240V	37.2 Kw	96 A
	480V	37.2 Kw	48 A

#### Optional Proofer (Ground Wire not Included):

- 208V - 7.8A - 1.6 kW - 50/60 Hz - 2 wires
- 240V - 9A - 2.2 kW - 50/60 Hz - 2 wires
- 480V - 4.1A - 2.2 kW - 50/60 Hz - 2 wires

### STANDARD PRODUCT WARRANTY

One Year Labor & Two Year Parts

### FEATURES & BENEFITS

- Intuitive Programmable Control per Chamber
- 600°F Max Bake Temperature
- 1" (25 mm) Refractory Stone Deck
- Stainless steel construction
- Independent Shot Steam Per Deck
- Single Electrical, Drain, & Water Connections
- Fully Insulated & Illuminated
- Retracting Doors (Saving Space When Loading & Unloading)

### OPTIONS & ACCESSORIES

- Water Filter (50-1530)
- Standard Proofer for 1 - 2 Decks; 3.5" shelf spacing (ES4T)
- Low Profile Proofer for 3 Decks; 3.5" shelf spacing (ES4TP)
- Stainless Steel Deck
- Non-Functional Eyebrow Canopy (EH4T)
- Modular Shipping
- Loaf Loader (LL4T)
- Single Phase Electrical
- 380-415V electrical configuration

### WATER & DRAIN CONNECTION

Water: 1/4"

Drain: 1/2"

### FINISH

Stainless Steel

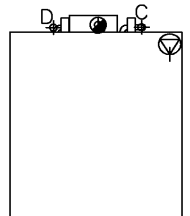
### MINIMUM CLEARANCES

1" (25 mm) Side & Back

6" (153 mm) Top

#### PLEASE NOTE:

- One single electrical, drain, water connection. Multiple decks are inter connected
- Electrical inlet located at the back on top right hand corner
- For Steam Efficiency minimum water inlet pressure 50 PSI
- To prevent steam system scale issue install water softener rated for a minimum of 3 GPM



### SHORT SPECIFICATION

Artisanal Stone Deck Oven, Electric, 1 Chamber, Programmable Control per Chamber, Individual Shot Steam per Chamber, One Piece Shipment Standard, Single Electrical Connection, Single Water & Drain Connection, Stainless Steel Construction, 1" Thick Refractory Stone, Standard with Heavy Duty Legs with Casters, Ecomode Programming—Helps Saving Energy, 5 kW (Total)

**DIMENSIONS & SHIPPING WEIGHT**

To calculate the total height of your artisan deck oven please follow each of the below worksheet. Please note that the artisan deck oven can not exceed the total height of 78" to fit under any required standard hood system:

**1. Optional Eyebrow Canopy**



Dimensions: 5" H (128mm) x 73"W (1854mm) x 54 1/4" D (1327mm)

**2. Top Cover Plate**



Dimensions: 2 1/2" H (64mm) x 73"W (1854mm) x 54 1/4" D (1327mm)

**3. Deck Choice #1 - 6" Internal Chamber Height**



Exterior Dimensions: 13 5/8" H (347mm) x 73"W (1854mm) x 54 1/4" D (1327mm)

Interior Dimensions: 6" H (153mm) x 56"W (1420mm) x 30" D (762mm)

**4. Deck Choice #2 - 8" Internal Chamber Height**



Exterior Dimensions: 15 5/8" H (397mm) x 73"W (1854mm) x 54 1/4" D (1327mm)

Interior Dimensions: 8" H (203mm) x 56"W (1420mm) x 30" D (762mm)

**5. Deck Choice #3 - 10" Internal Chamber Height**



Exterior Dimensions: 17 5/8" H (447mm) x 73"W (1854mm) x 54 1/4" D (1327mm)

Interior Dimensions: 10" H (253mm) x 56"W (1420mm) x 30" D (762mm)

**6. Deck Choice #4 - 12" Internal Chamber Height**



Exterior Dimensions: 19 5/8" H (497mm) x 73"W (1854mm) x 54 1/4" D (1327mm)

Interior Dimensions: 12" H (303mm) x 56"W (1420mm) x 30" D (762mm)

**7. Base Plate**



Dimensions:

2 1/2" H (64mm) x 73"W (1854mm) x 54 1/4" D (1327mm)

**8. Standard Legs with Casters**



Dimensions:

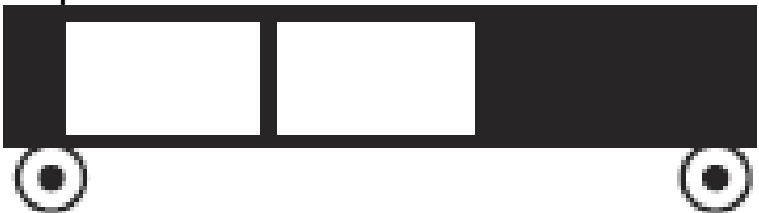
**One Deck:** 33" H (838mm) x 73"W (1854mm) x 54 1/4" D (1327mm)

**Two Deck:** 24" H (610mm) x 73"W (1854mm) x 54 1/4" D (1327mm)

**Three Deck:** 21" H (533mm) x 73"W (1854mm) x 54 1/4" D (1327mm)

**Four Deck:** 9" H (227mm) x 73"W (1854mm) x 54 1/4" D (1327mm)

**9. Optional Proofer**



Standard Proofer Dimensions (For 1 - 2 Chambers):

32 1/8" H (817mm) x 73"W (1854mm) x 54 1/4" D (1327mm)

Shipping Weight: 750 lbs (341 kg)

Low Profile Proofer Dimensions (For 3 Chambers):

24 5/8" H (651mm) x 73"W (1854mm) x 54 1/4" D (1327mm)

Shipping Weight: 750 lbs (341 kg)

**TOTAL ARTISAN DIMENSIONS:** (Height) \_\_\_\_\_ x (Width) \_\_\_\_\_ x (Depth) \_\_\_\_\_



5600 13th Street  
Menominee, MI 49858  
sales@nu-vu.com  
(800) 338-9886 Toll Free  
(906) 843-4401 Phone  
(906) 863-5889 Fax  
www.doyon.qc.ca

**SPECIFICATIONS SUBJECT TO CHANGE WITHOUT NOTICE  
KCL & REVIT DRAWINGS UPON REQUEST**